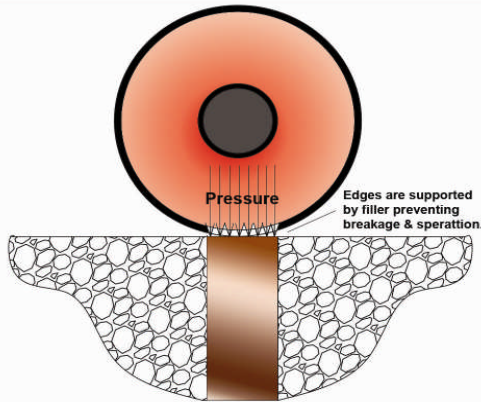


**POLYUREA
JOINT
FILLER**

Polyurea Joint Filler Two Component System

Quick Joint 85 has a slower gel time and better elongation properties than other similar polyureas. The slow gel time increases the wet out time for better adhesion to the joint side walls. The better elongation also allows the joint to handle greater movement. Also, because Quick-Joint 85 is 100% polyurea (not a hybrid) it is not moisture sensitive and will set up at below freezing temperatures.

Quick-Joint 85 is user friendly. The slower gel time allows the applicator more time when changing static mixers. Trimming is effortless even the next day.

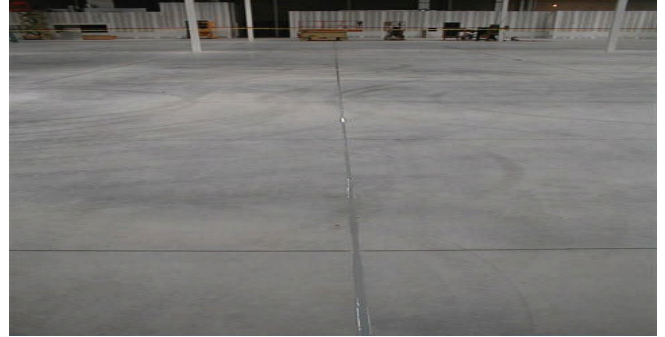


Quick Joint 85 protects concrete joint edges from wheel pressure.



Primary Applications

- Saw Cut & Construction Joints
- Crack repair
- Damage Control Joints
- Facility Maintenance



Physical Properties

| | | |
|------------------|-------------|------------|
| Elongation | ASTM D 412 | 580% |
| Tear Strength | ASTM D 624 | 430 psi |
| Hardness | ASTM D 2240 | 85 +/-5 A |
| Tensile Strength | ASTM D-412 | 1110 psi |
| Tack Free Time | | 10 minutes |

Coverage

Quick Joint 85 coverage rate estimated with a 1:1 ration plural dispensing machine with 3/4 inch opening. It cannot be mixed or installed by hand.

Estimated Coverage Rates:
Per Linear ft. (One Gallon)

1/4" x 1/4" = 308 ft.

1/2" x 3/4" = 51 ft.

1" x 3/4" = 26 ft.

Sales and Distribution

CSS POLYMERS, INC.
CHRIS SCATA
PH: 770/329-0996
FAX: 866/694-3504
E-MAIL: CHRIS@CSSPOLYMERSINC.COM
WEBSITE: WWW.CSSPOLYMERSINC.COM

Preparation and Installation

Cleaning and preparation is crucial before installation. All dirt, debris, and curing compound should be removed. Joints and edges should be cleaned and as dry as possible for maximum result. Primer is not necessary. Quick Joint 85 requires a plural dispensing machine. Joints can be filled in a single pass, but two passes are recommended. Slightly overfill joint to allow for a clean level shave transaction. Trimming of the overfill can be done in approximately 45 minutes, but can also be left to the next day.

Advantages of Quick Joint 85

- Odorless
- No Toxic Vapor
- Return to Service in 1 hour
- Meets California VOC Regulations
- USDA Compliant
- Cures from below 0° Fahrenheit



* Contact **CSS Polymers Inc.** for preparation and application equipment recommendation, along with job coordination.



Industry Standards Regarding Joint Filler Installation Timing and Depth

Concrete slabs-on-grade shrink over time after placement. The American Concrete Institute (ACI) urges to wait as long as possible to fill joints after concrete slabs have been poured, minimum 30 days. This allows for shrinking to occur. Possibility of separation of joint filler from the side walls increases if the scheduling is done too early. In this case, disconnection will take place within the joint filler or along the line where the joint filler and edge meet.

ACI also recommends saw-cut control and construction joints to have Quick Joint 85 installed to full depth. Adding backer rods or sand at the bottom of joints can be time consuming. The quick set characteristic makes those other materials unnecessary to seal cracks. If those materials are used for the joints, the minimum depth Quick Joint 85 can be installed is 1 inch.

Main Office

CSS POLYMERS, INC.
2659 FREEDOM PKWY. STE 294
CUMMING, GA 30041
PH: 770/645-0101
FAX: 866/694-3504
E-MAIL: INFO@CSSPOLYMERSINC.COM
WEBSITE: WWW.CSSPOLYMERSINC.COM